

Welcome to my portfolio

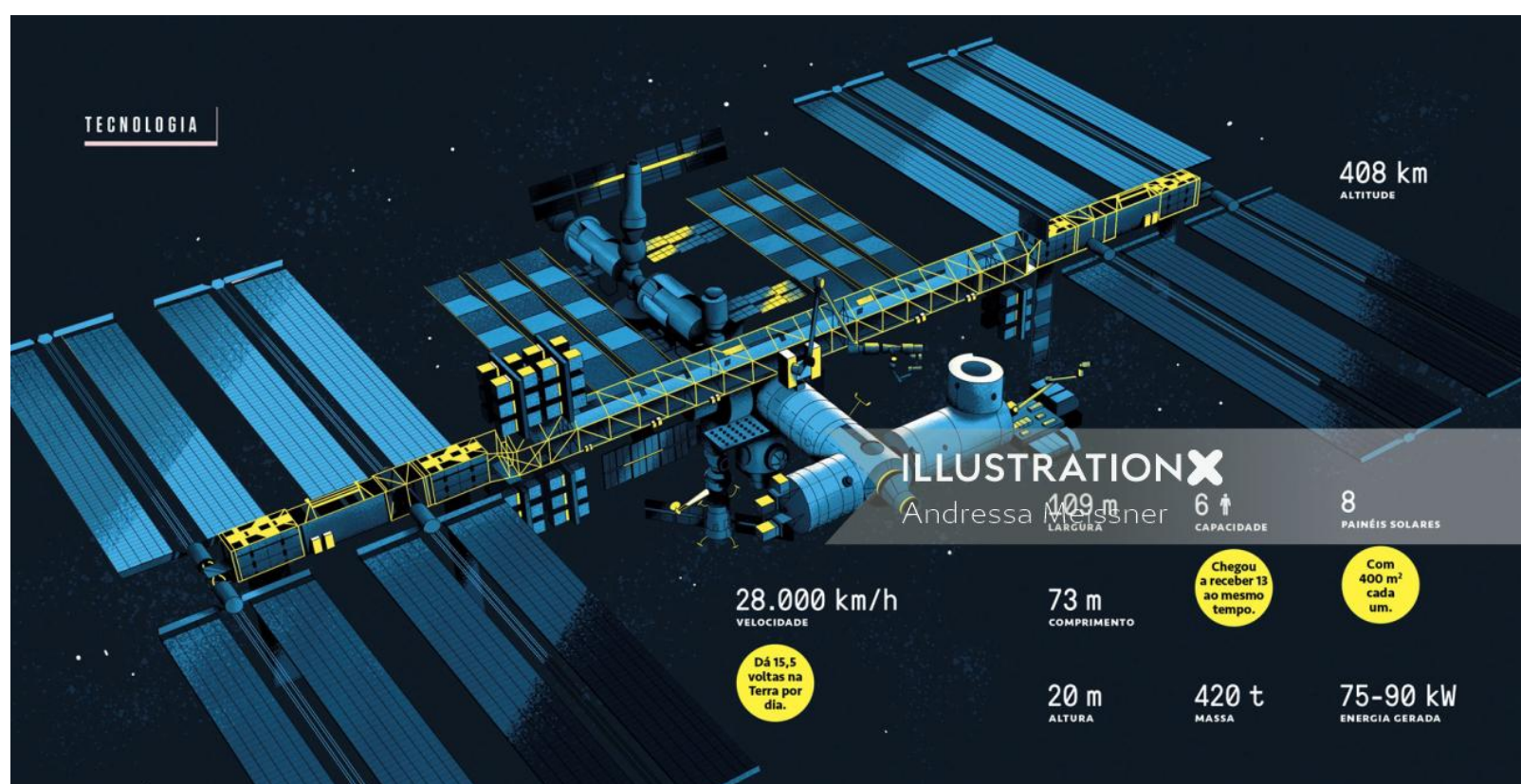
Andressa Meissner

www.illustrationx.com/AndressaMeissner



Andressa Meissner

www.illustrationx.com/AndressaMeissner



Andressa Meissner

www.illustrationx.com/AndressaMeissner



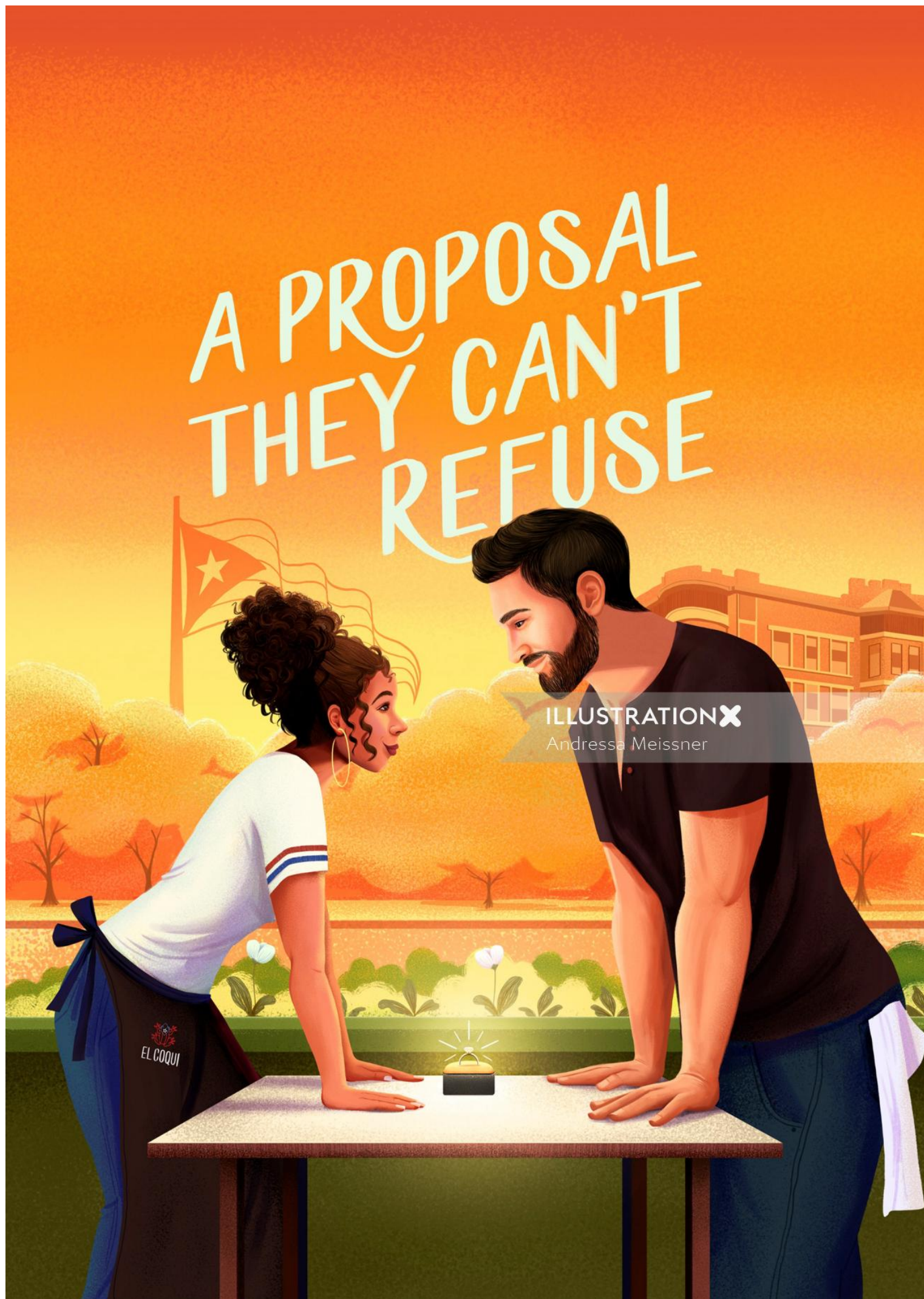
Andressa Meissner

www.illustrationx.com/AndressaMeissner



Andressa Meissner

www.illustrationx.com/AndressaMeissner



Andressa Meissner

www.illustrationx.com/AndressaMeissner



Andressa Meissner

www.illustrationx.com/AndressaMeissner



Andressa Meissner

www.illustrationx.com/AndressaMeissner



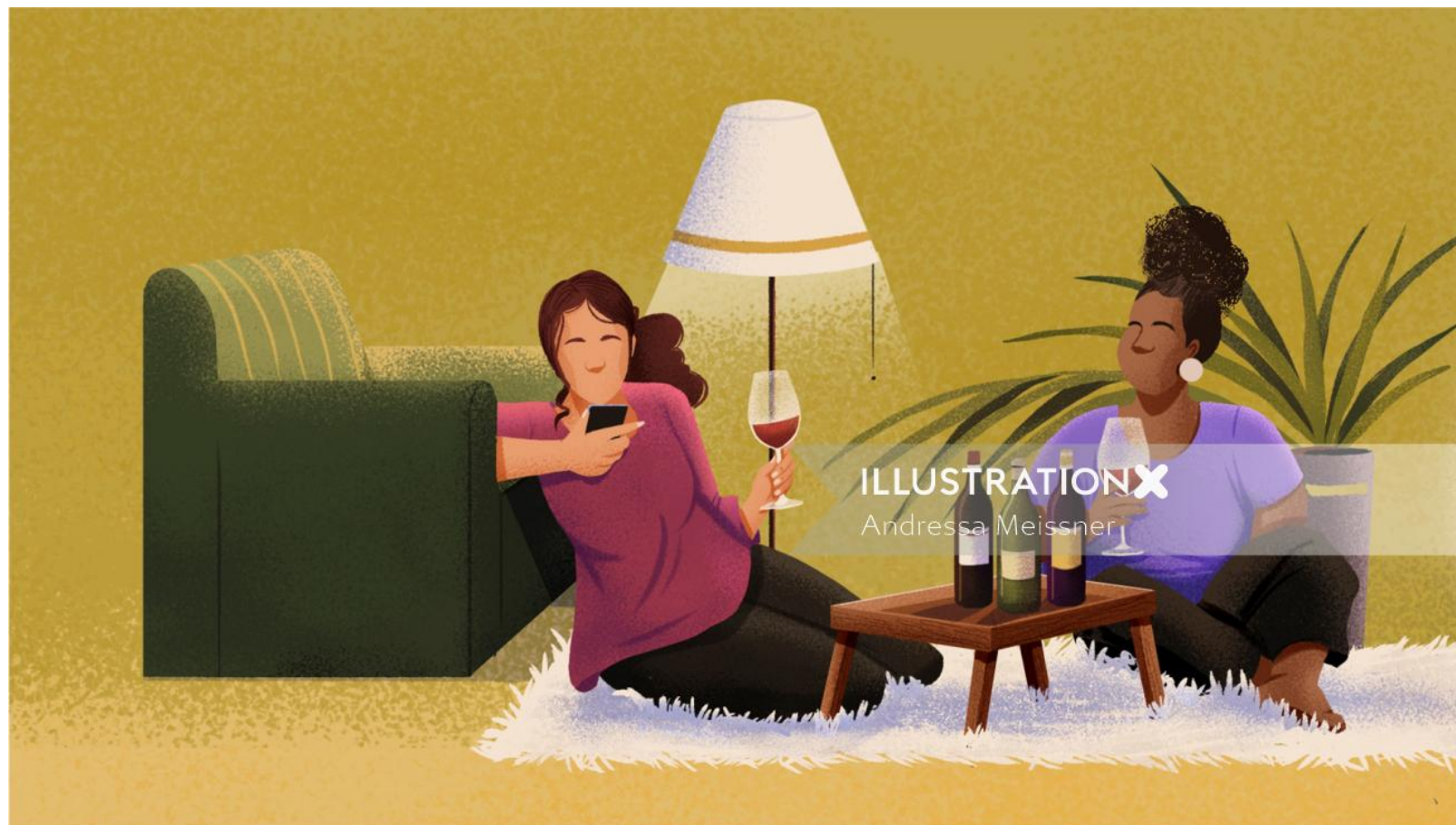
Andressa Meissner

www.illustrationx.com/AndressaMeissner



Andressa Meissner

www.illustrationx.com/AndressaMeissner



ILLUSTRATIONX
Andressa Meissner

Andressa Meissner

www.illustrationx.com/AndressaMeissner



Andressa Meissner

www.illustrationx.com/AndressaMeissner



Andressa Meissner

www.illustrationx.com/AndressaMeissner



Andressa Meissner

www.illustrationx.com/AndressaMeissner



Andressa Meissner

www.illustrationx.com/AndressaMeissner



Andressa Meissner

www.illustrationx.com/AndressaMeissner



Andressa Meissner

www.illustrationx.com/AndressaMeissner



Andressa Meissner

www.illustrationx.com/AndressaMeissner

ESTAÇÃO CHINESA

A nova Tiangong ("palácio no céu", em chinês) deve ficar pronta em 2022. Ela será formada por cinco módulos.

20 m
COMPRIMENTO

Cerca de 1/3 da ISS.

80-100 t
MASSA

Cerca de 1/4 da ISS.

425 km
ALTITUDE

3*
CAPACIDADE

* Estimativa. A China não divulgou o número.

110 m³
ÁREA HABITÁVEL

Equivale a um apartamento de 40 m².

WENTIAN
Primeiro módulo experimental, com lançamento previsto para 2022. Terá a função de hospedar pesquisas científicas. Também deve servir como alojamento.

TIANHE
É o módulo central, lançado em abril de 2021. Principal alojamento dos astronautas e seus experimentos.

SHEN-ZHOU
Cápsula tripulada, chegou à estação em junho de 2021. É a responsável por trazer astronautas da Terra e levá-los de volta.

MENG-TIAN
Segundo módulo experimental, também programado para este ano. Será a sede de novas pesquisas científicas.

TIAN-ZHOU
Nave de carga não tripulada, com capacidade para trazer até 6 toneladas de suprimentos.

Escotilha de saída
Braço robótico
Módulo de reentrada
Módulo orbital
Compartimento de carga
Seção de propulsão

ILLUSTRATIONX
Andressa Meissner

36 SUPER MARÇO 2022

Andressa Meissner

www.illustrationx.com/AndressaMeissner



Andressa Meissner

www.illustrationx.com/AndressaMeissner



Andressa Meissner

www.illustrationx.com/AndressaMeissner



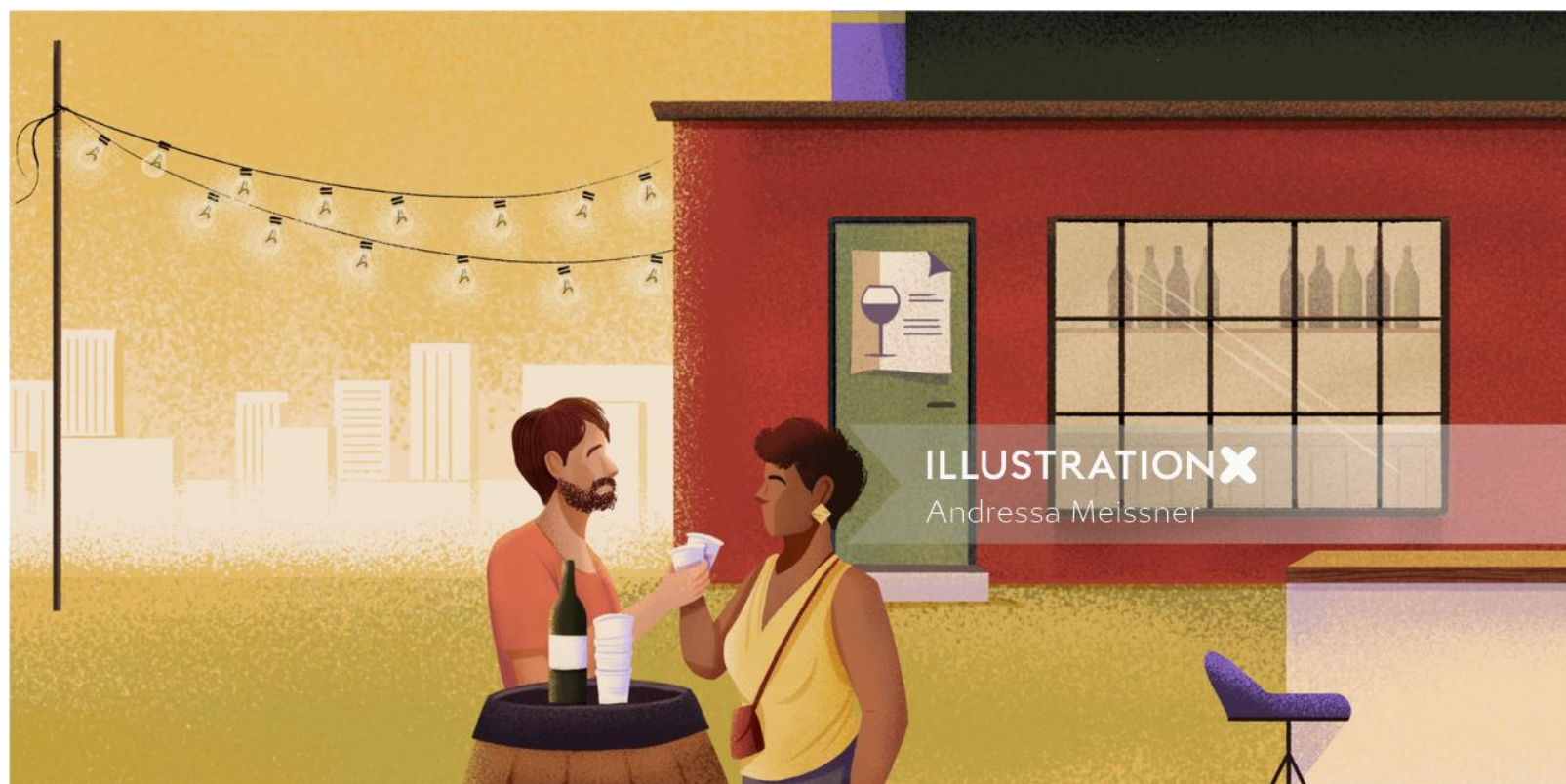
Andressa Meissner

www.illustrationx.com/AndressaMeissner



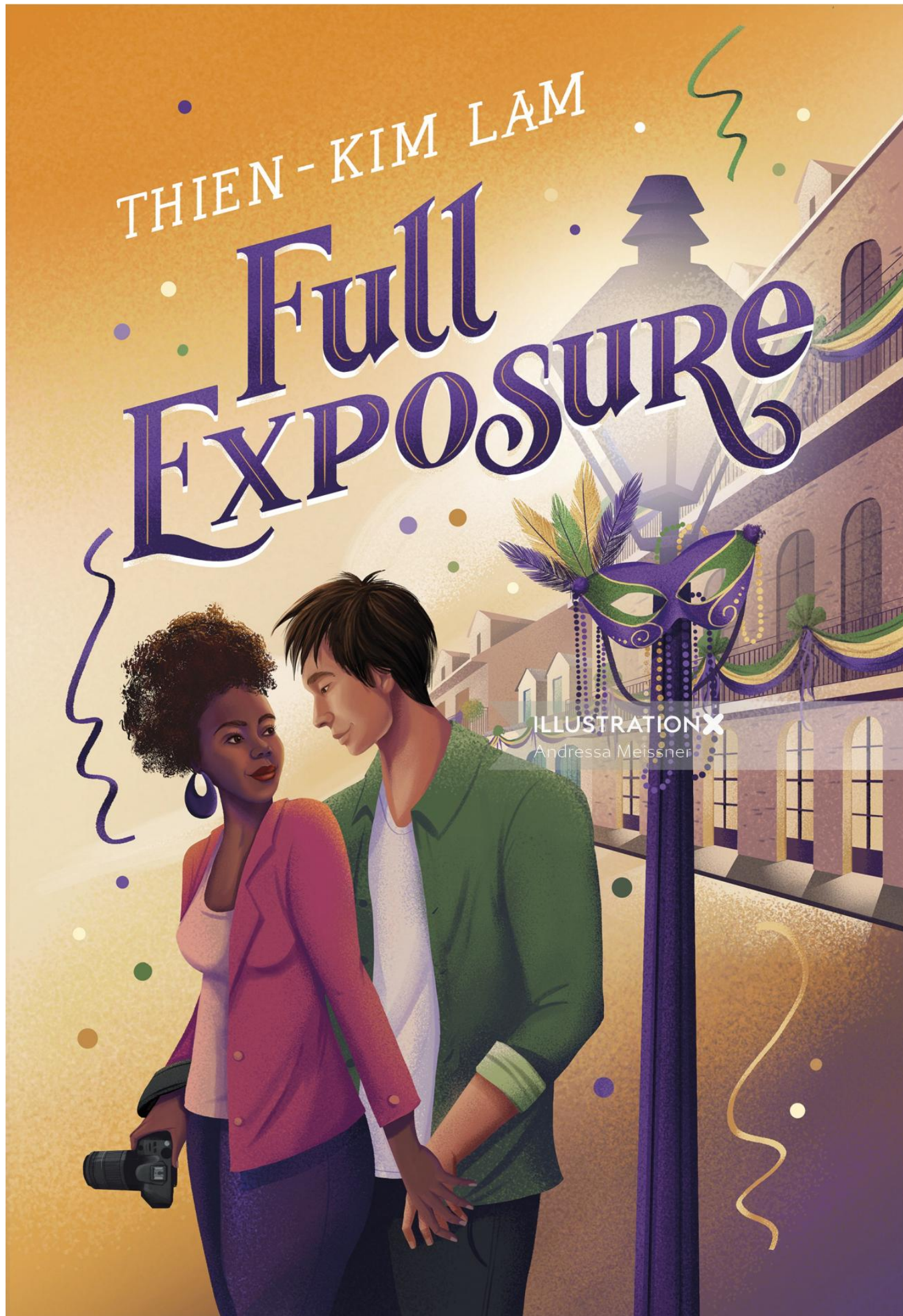
Andressa Meissner

www.illustrationx.com/AndressaMeissner



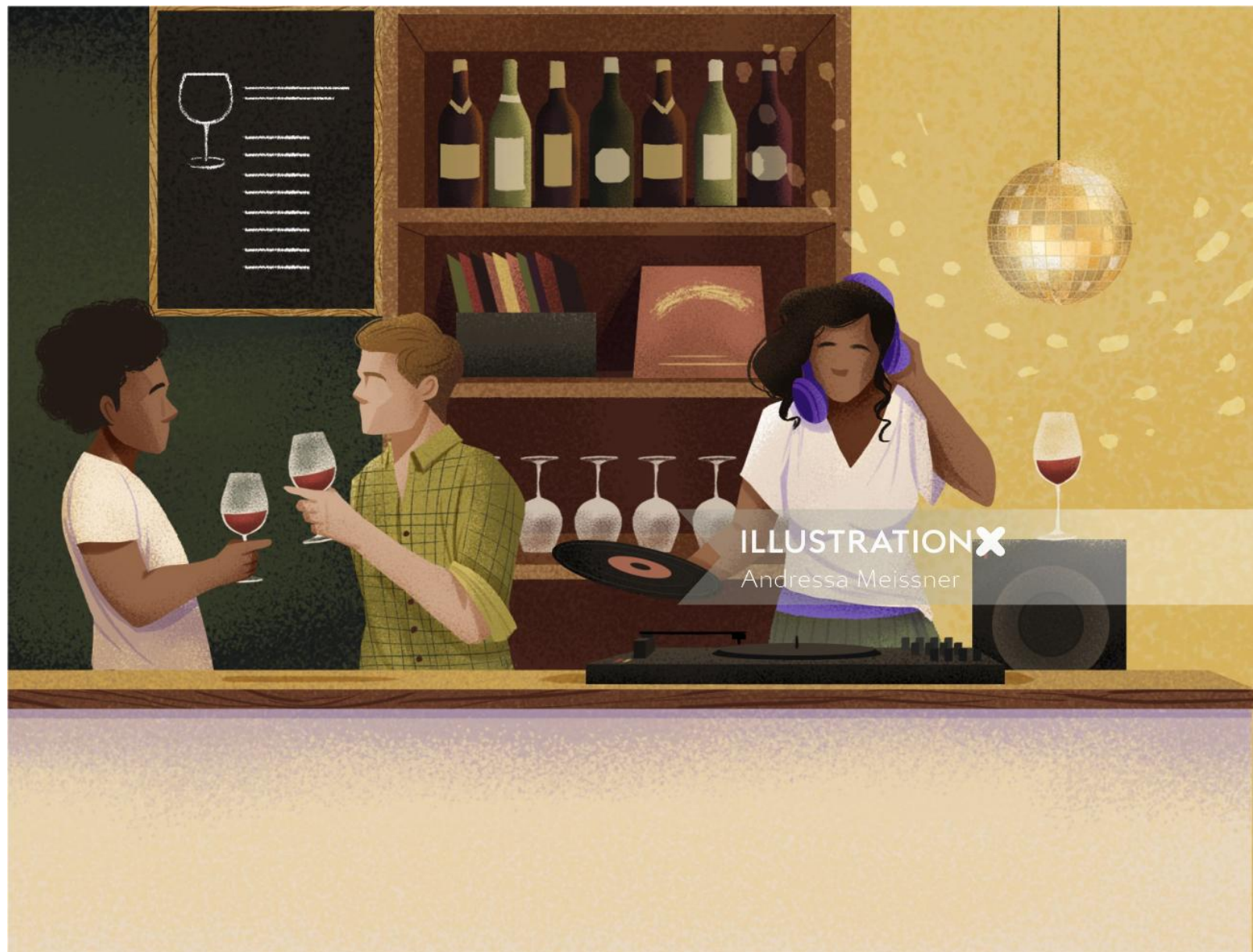
Andressa Meissner

www.illustrationx.com/AndressaMeissner



Andressa Meissner

www.illustrationx.com/AndressaMeissner



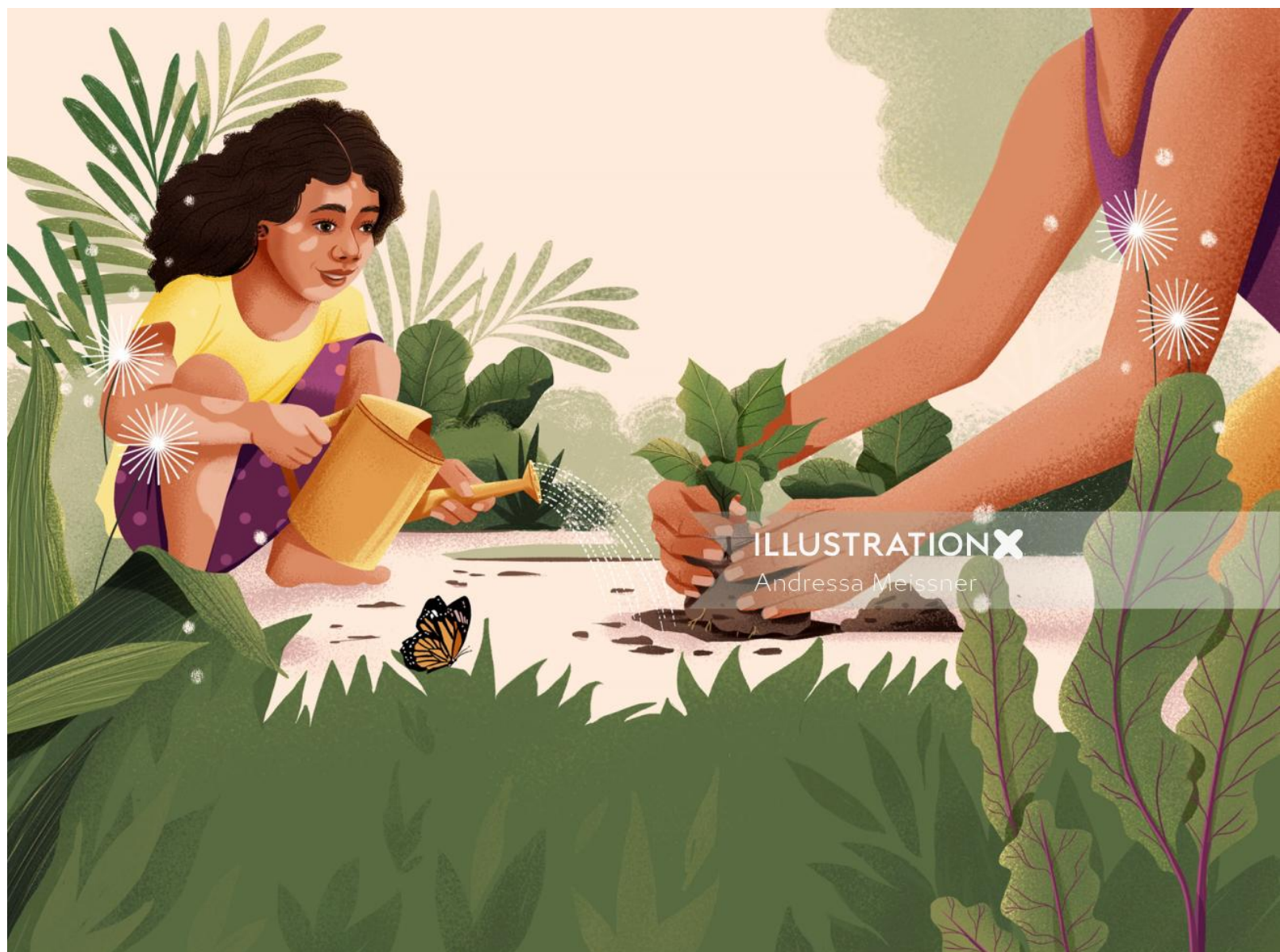
Andressa Meissner

www.illustrationx.com/AndressaMeissner



Andressa Meissner

www.illustrationx.com/AndressaMeissner



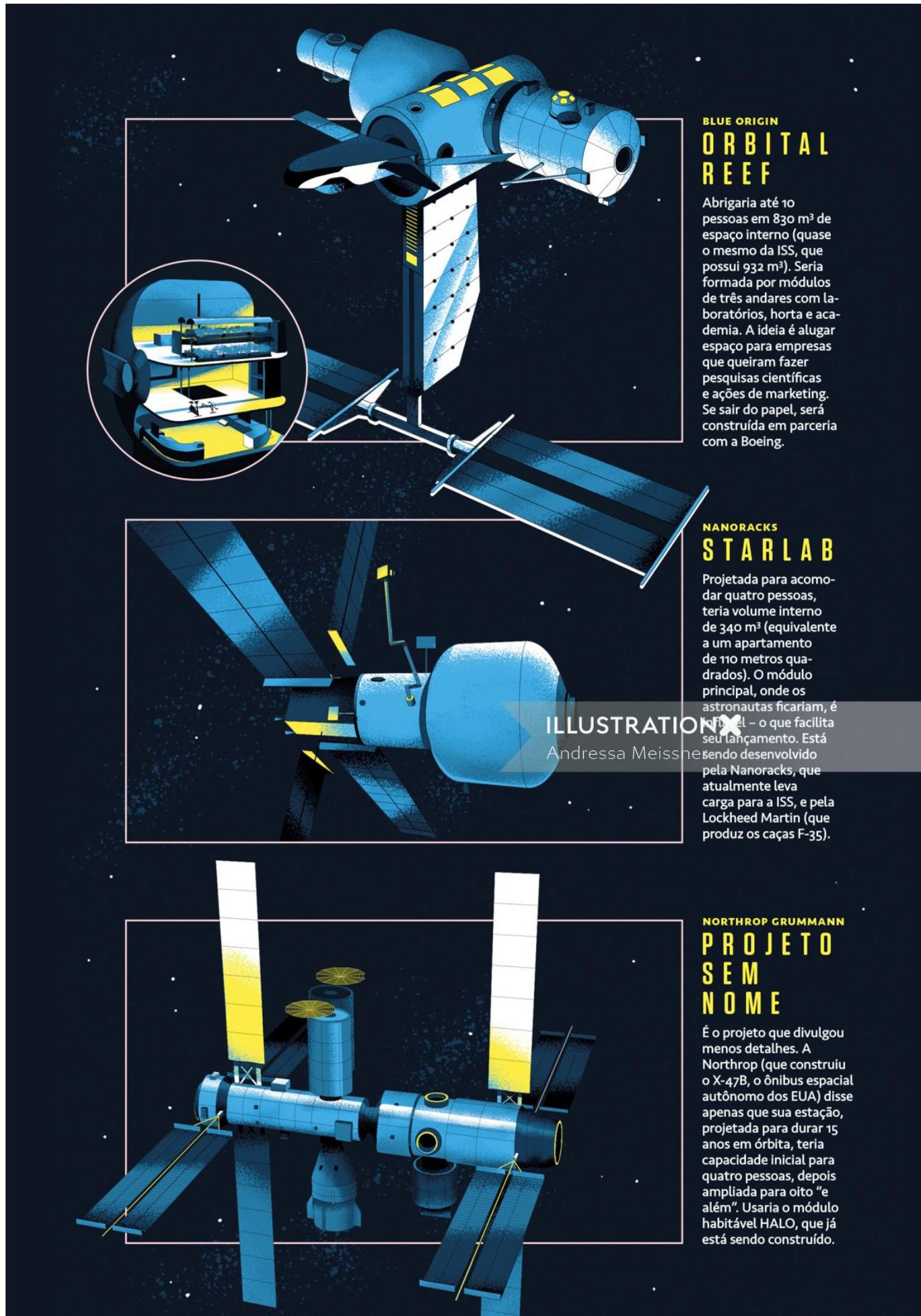
Andressa Meissner

www.illustrationx.com/AndressaMeissner



Andressa Meissner

www.illustrationx.com/AndressaMeissner



ILLUSTRATIONX
Andressa Meissner

Andressa Meissner

www.illustrationx.com/AndressaMeissner



Andressa Meissner

www.illustrationx.com/AndressaMeissner



Andressa Meissner

www.illustrationx.com/AndressaMeissner



Andressa Meissner

www.illustrationx.com/AndressaMeissner



Andressa Meissner

www.illustrationx.com/AndressaMeissner



Andressa Meissner

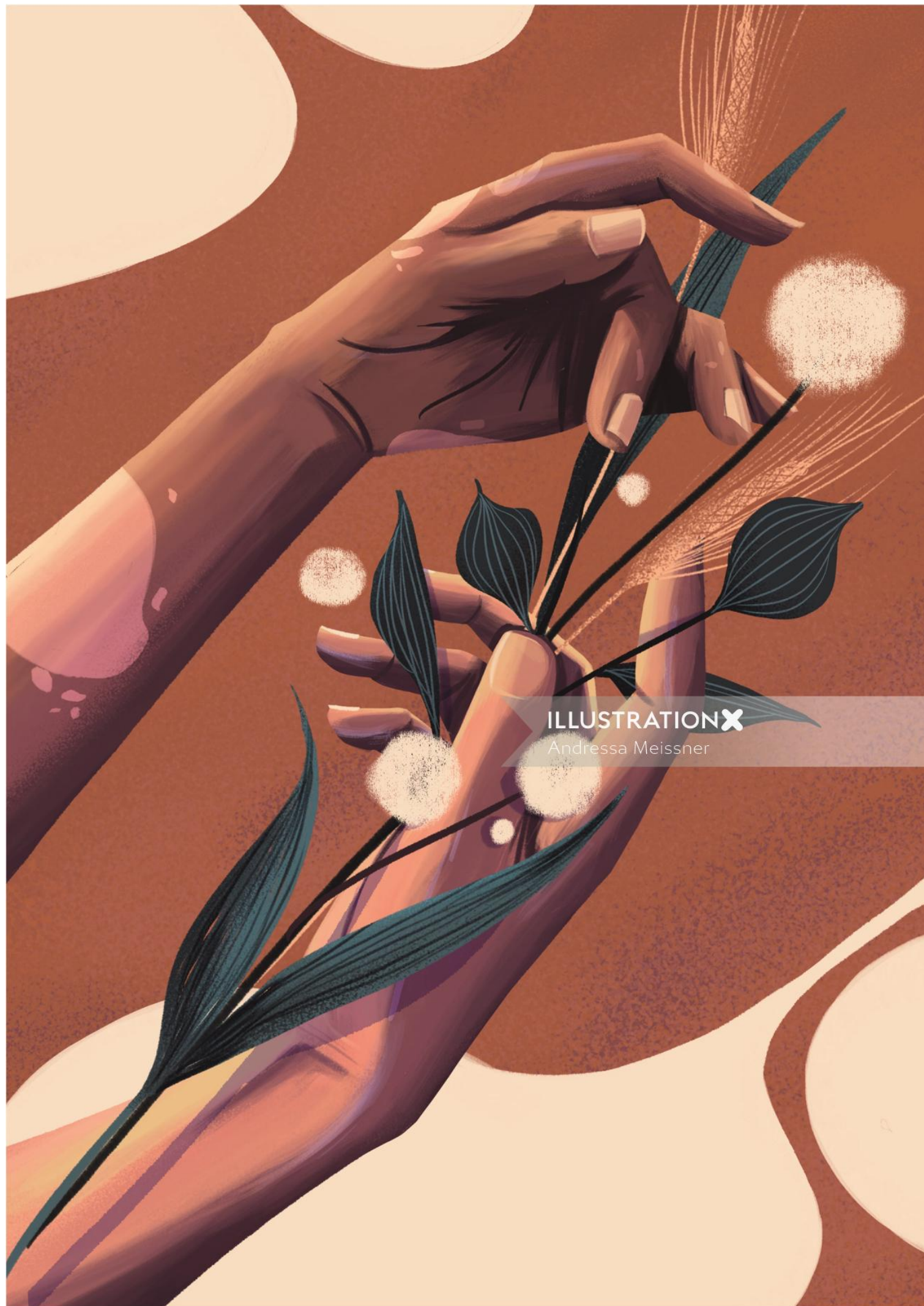
www.illustrationx.com/AndressaMeissner



ILLUSTRATIONX
Andressa Meissner

Andressa Meissner

www.illustrationx.com/AndressaMeissner



Andressa Meissner

www.illustrationx.com/AndressaMeissner



Andressa Meissner

www.illustrationx.com/AndressaMeissner



Andressa Meissner

www.illustrationx.com/AndressaMeissner



ILLUSTRATIONX
Andressa Meissner

Andressa Meissner

www.illustrationx.com/AndressaMeissner



Need advice?

We're ready to help



howdy@illustrationx.com

1-646-808-0205

ILLUSTRATION 

Connecting You to a World of Illustration

New York, USA

www.illustrationx.com