

Welcome to my portfolio

NoelleRx

www.illustrationx.com/jp/NoelleRx



NoelleRx

www.illustrationx.com/jp/NoelleRx



NoelleRx

www.illustrationx.com/jp/NoelleRx



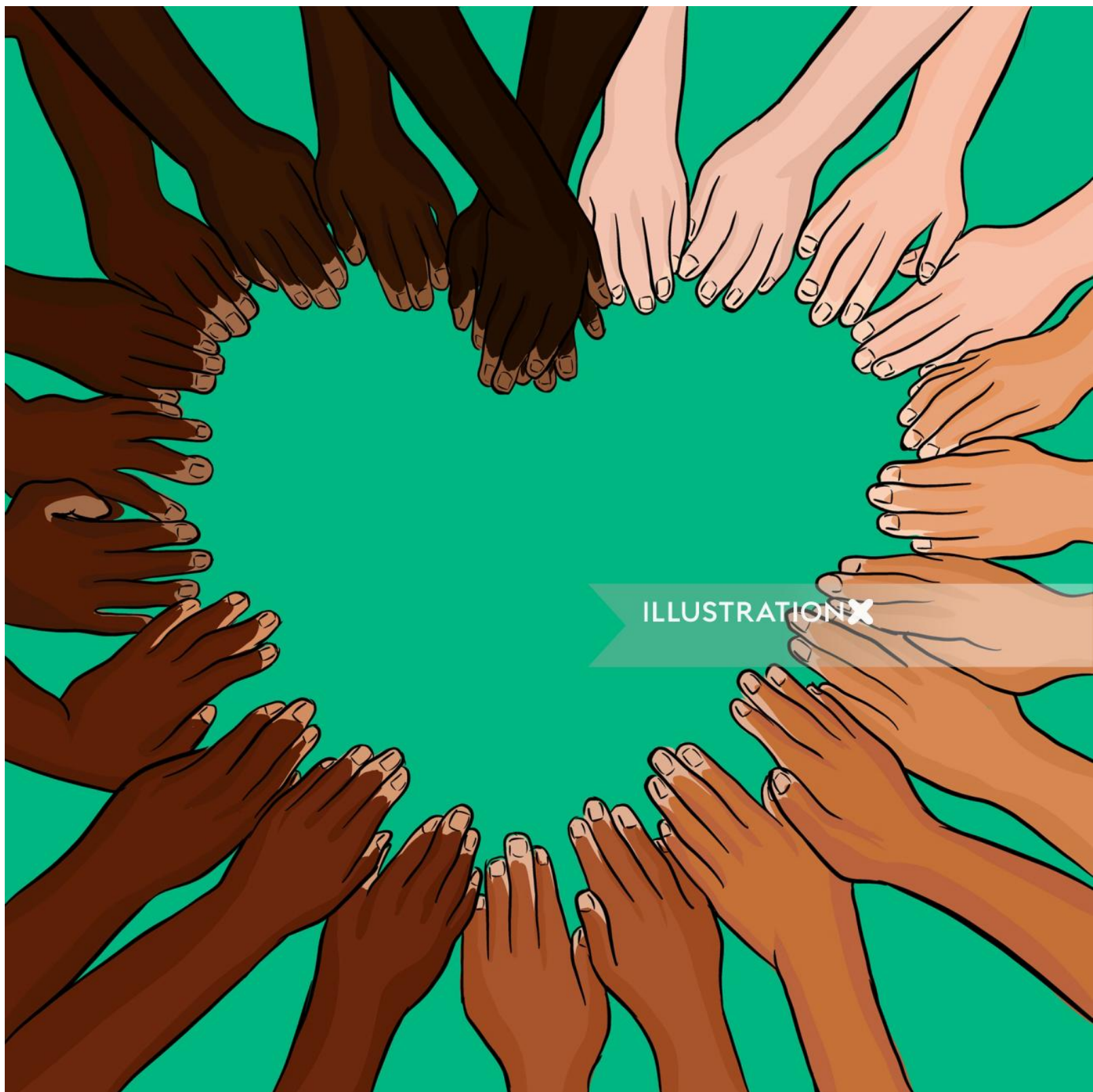
NoelleRx

www.illustrationx.com/jp/NoelleRx



NoelleRx

www.illustrationx.com/jp/NoelleRx



NoelleRx

www.illustrationx.com/jp/NoelleRx



NoelleRx

www.illustrationx.com/jp/NoelleRx



NoelleRx

www.illustrationx.com/jp/NoelleRx



NoelleRx

www.illustrationx.com/jp/NoelleRx



NoelleRx

www.illustrationx.com/jp/NoelleRx



NoelleRx

www.illustrationx.com/jp/NoelleRx



NoelleRx

www.illustrationx.com/jp/NoelleRx



NoelleRx

www.illustrationx.com/jp/NoelleRx



NoelleRx

www.illustrationx.com/jp/NoelleRx



NoelleRx

www.illustrationx.com/jp/NoelleRx



NoelleRx

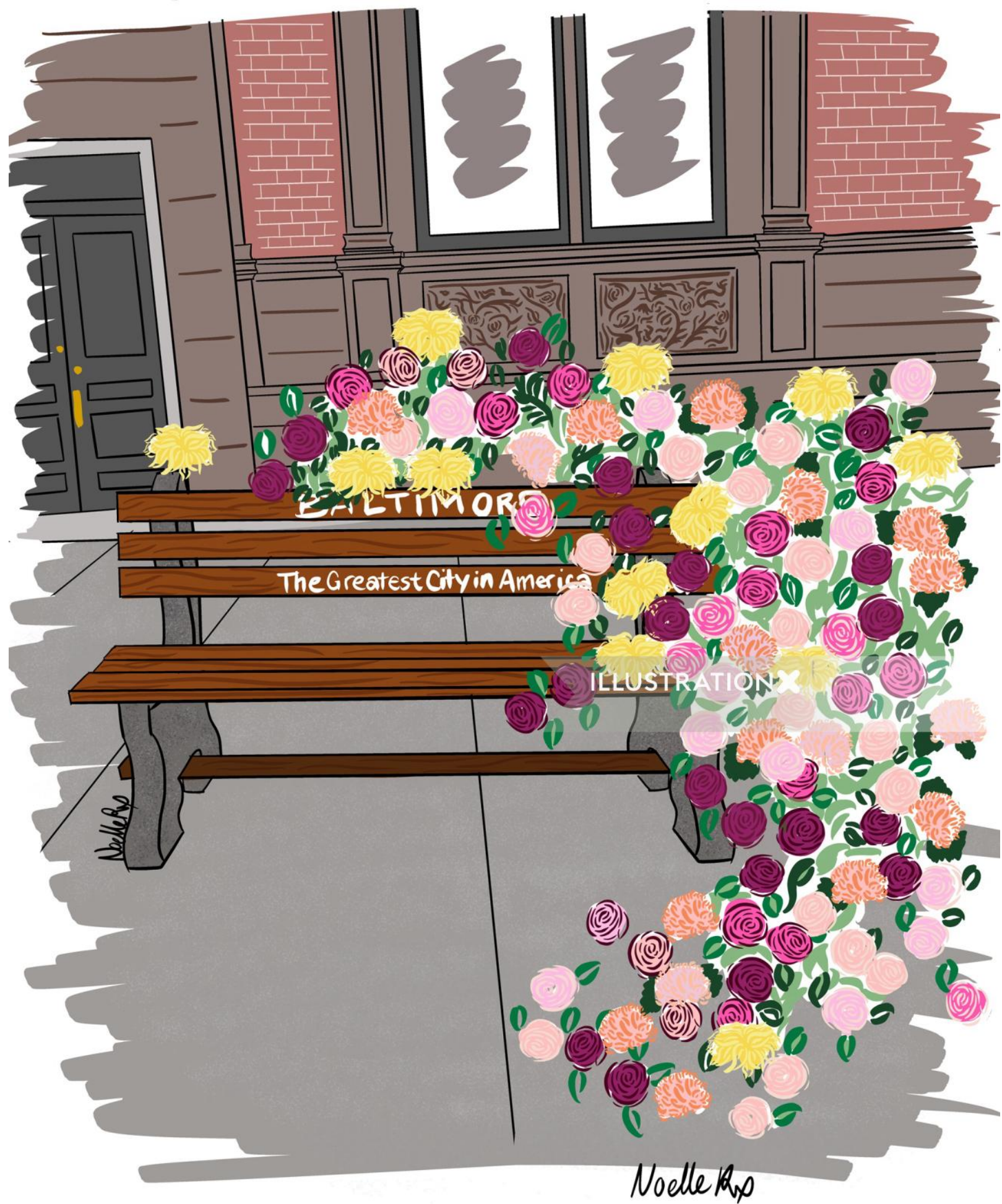
www.illustrationx.com/jp/NoelleRx



NoelleRx

www.illustrationx.com/jp/NoelleRx





NoelleRx

www.illustrationx.com/jp/NoelleRx



NoelleRx

www.illustrationx.com/jp/NoelleRx



NoelleRx

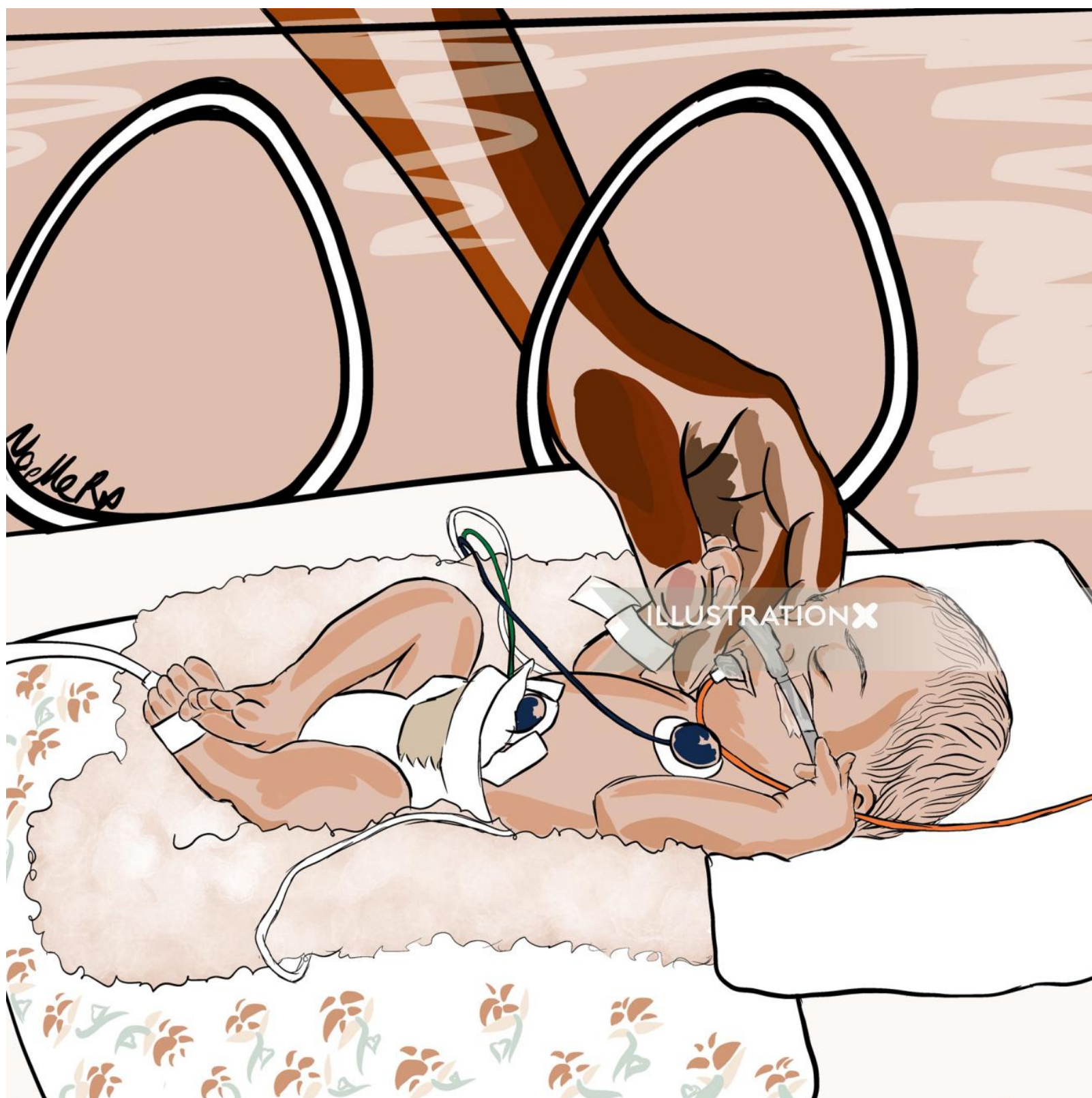
www.illustrationx.com/jp/NoelleRx



NoelleRx

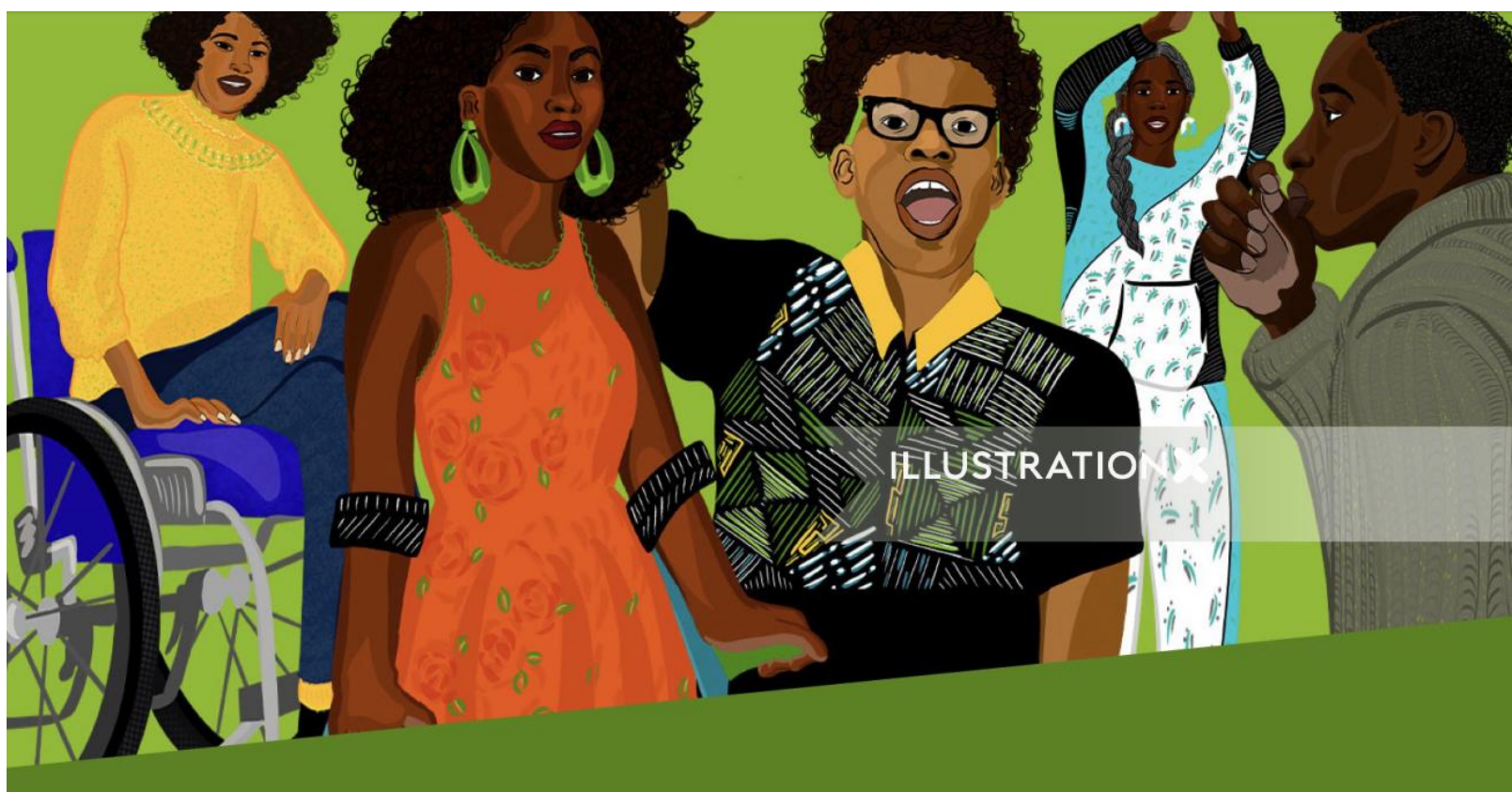
www.illustrationx.com/jp/NoelleRx





NoelleRx

www.illustrationx.com/jp/NoelleRx



DISCO



Textiles at Centro Cultural, one of many shops where Casa Palopó guests can spend part of their nightly rate.

► Palopó's approach is unusually proactive, but these types of community perks are an increasingly popular way for a hotel to connect its guests with the neighborhood. The nine-month-old **Kimpton Hotel Palomar South Beach** (hotelpalomar-southbeach.com; doubles from \$200), for instance, announced exclusive partnerships with some of Miami's top wellness brands. Guests get 20 percent off treatments at Skin by Tatum and classes at the Pilates Place, with more to come. Provenance Hotels just launched its Community Pass program; guests at Seattle's **Hotel Max** (provenancehotels.com; doubles from \$122), for example, get two-for-one wine tastings at the Browne Family Vineyards tasting room in Pioneer Square. Soon, all of Provenance's 14 U.S. hotels will offer local discounts.

These initiatives feel particularly impactful now, but some hoteliers have been forging partnerships like these for years. Since the **Downtown Clifton Hotel Tucson** (downtowntucsonhotel.com; doubles from \$139) opened in 2014, guests have been able to bag deals at 20 local hot spots just by flashing their key. "We want to eventually turn this program into a digital walking tour," says owner Toniqua Lane. "It's a fun way to make the stay more interactive and share what we love about the city."

SETTING THE STANDARD

These companies make finding a socially responsible tour operator easier than ever. **By Lynn Houghton**

NIARRA TRAVEL

When planning trips to Africa, many travelers don't realize that commissions of up to 35 percent are paid to large tour operators by the local hospitality industry. Niarra Travel, based in London, has committed to reducing its commissions to 10 percent when referring clients to local businesses, like northern Kenya's Reteti Elephant Sanctuary, which employs community members as keepers (like Naomi Leshongoro, right). This leaves more funds for the places and communities who need them most—and honors the concept of *niarra*, the Swahili word for "with utmost purpose." niarratravel.com.

ETERNAL LANDSCAPES MONGOLIA

Women have typically been excluded from meaningful roles in Mongolia's tourism sector, but Eternal Landscapes aims to change that. The company—which offers adventure journeys throughout the country, including treks on horse or camel—recently launched a 15-day women-only trip led by female guides (right). Highlights include visiting quilters in the capital, Ulaanbaatar, a homestay with herding families in the Gobi Desert, and learning from female eagle hunters in the Bayan Ölgii province. eternal-landscapes.co.uk.

BLACK CULTURAL HERITAGE TOURS

This company's itineraries spotlight the people and places that have shaped Black culture in the United States. Road trips in 2022 will run throughout the Southeast, including a stop at Morehead Manor Bed & Breakfast in Durham, North Carolina, run by Daniel and Monica R. Edwards (right). The trips are supported by the National Blacks in Travel and Tourism Collaborative, which is partnering with tourism boards, local businesses, and other travel associations to build a Black travel "ecosystem." experienceblackculture.com.

10%
Niarra Travel's commission from on-the-ground tour operators, compared to the standard 35%.



ILLUSTRATIONS BY CANDICE TAVARES

High blood pressure + joint pain

TYLENOL® works the way that Motrin® doesn't

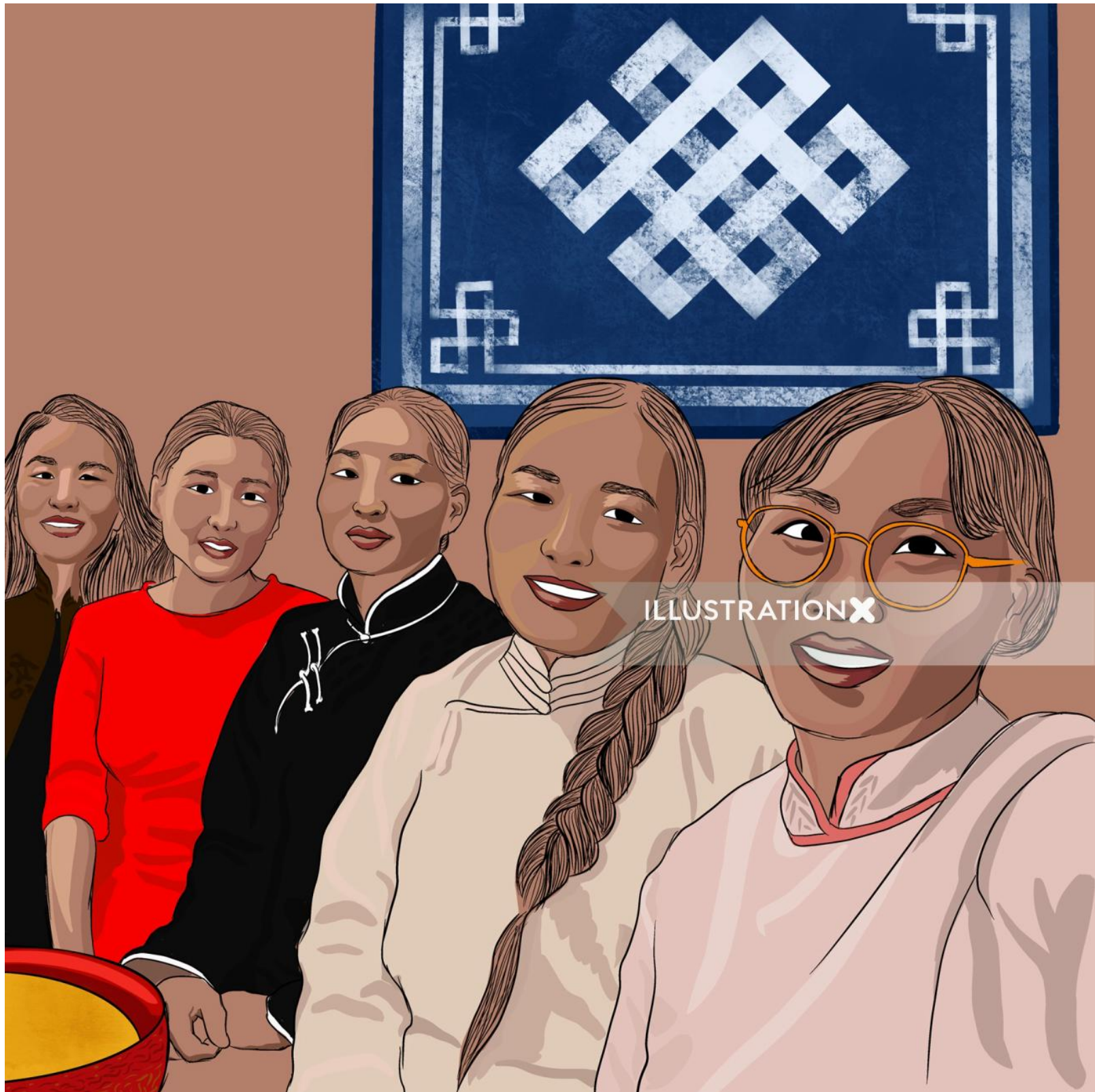
#1 Doctor Recommended OTC* For Pain

Talk to your doctor about any other health conditions

TALL TALK: "OVER-THE-COUNTER" PAIN RELIEF

NoelleRx

www.illustrationx.com/jp/NoelleRx



NoelleRx

www.illustrationx.com/jp/NoelleRx



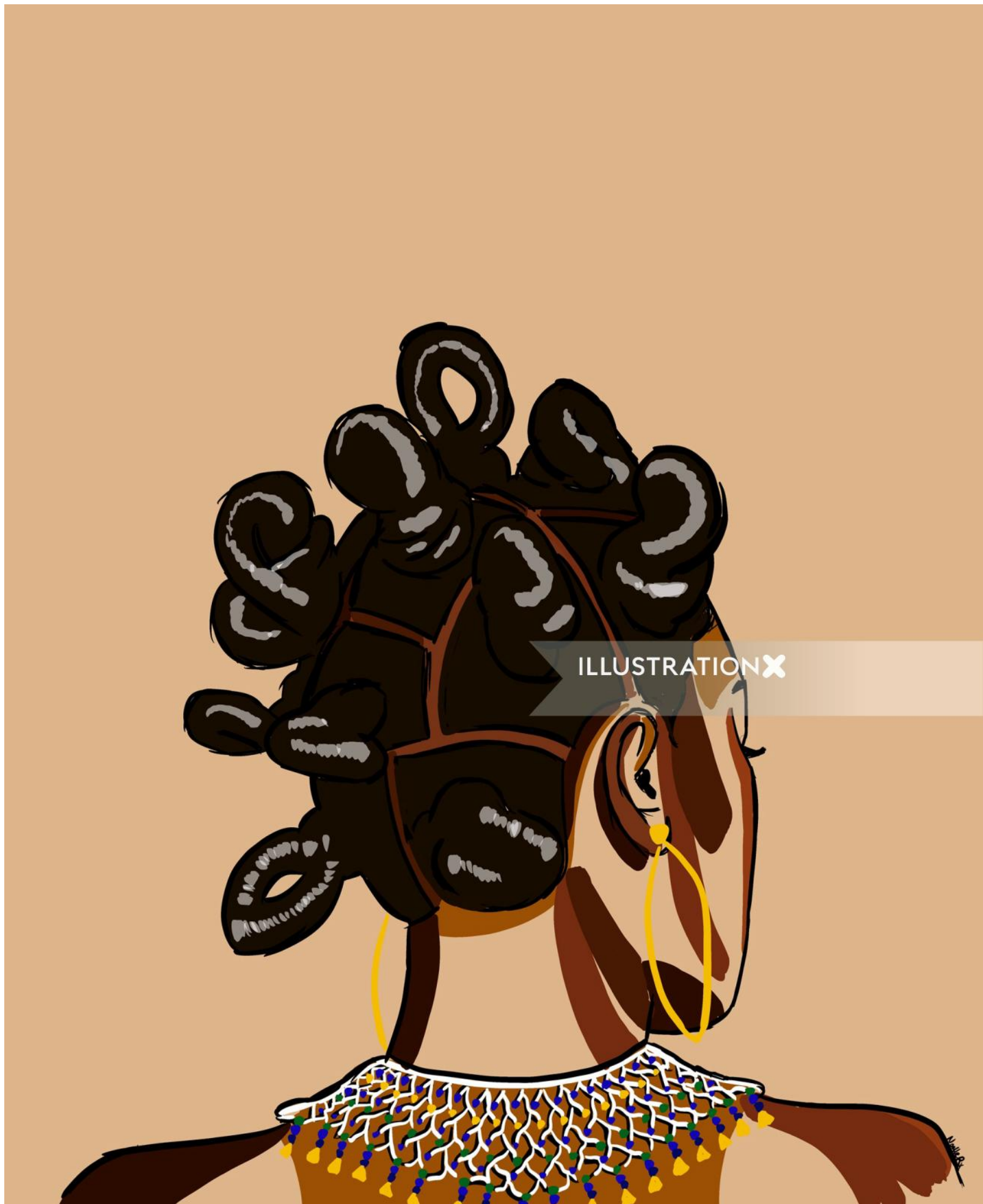
NoelleRx

www.illustrationx.com/jp/NoelleRx



NoelleRx

www.illustrationx.com/jp/NoelleRx



NoelleRx

www.illustrationx.com/jp/NoelleRx



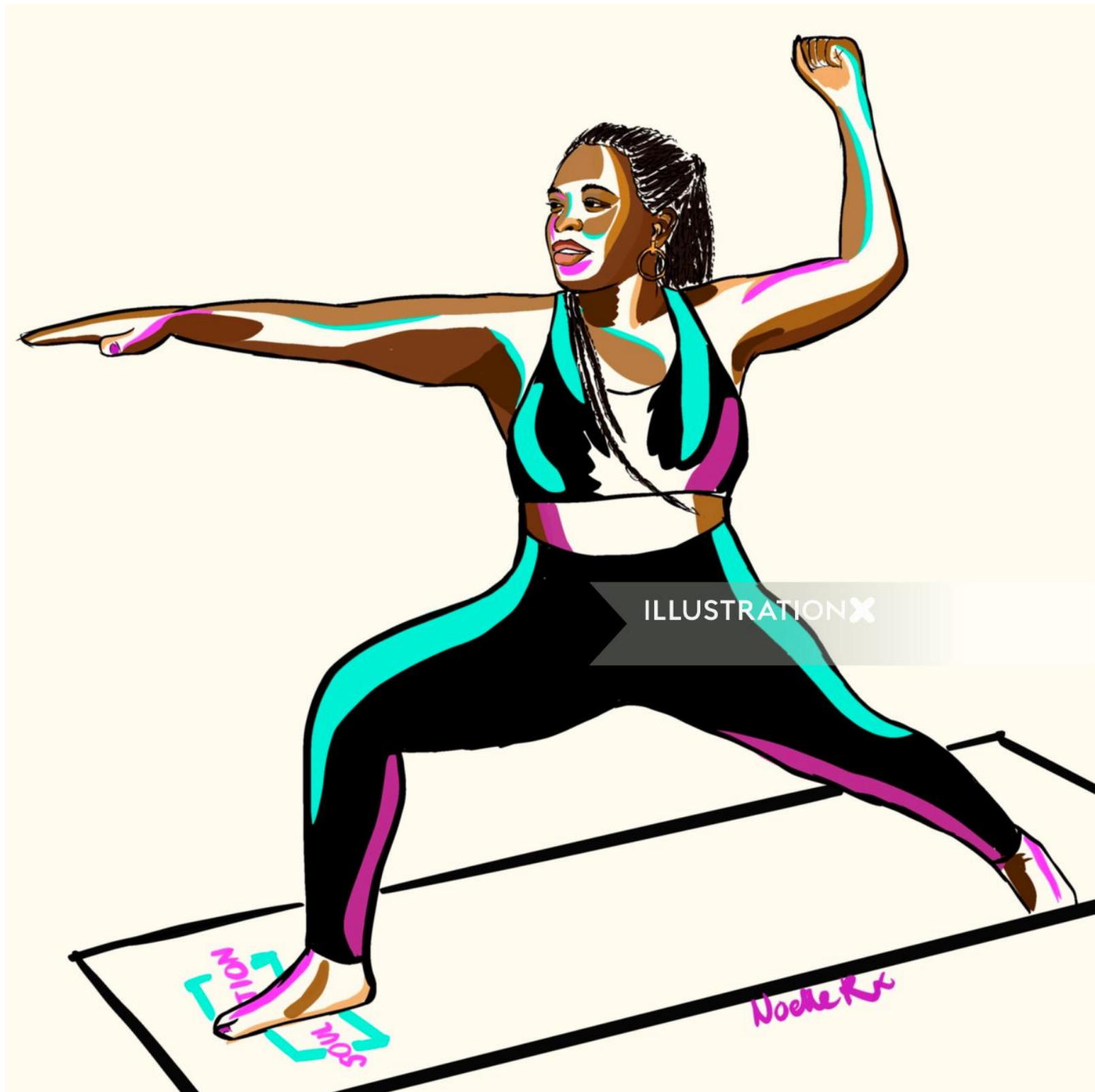
NoelleRx

www.illustrationx.com/jp/NoelleRx



NoelleRx

www.illustrationx.com/jp/NoelleRx



NoelleRx

www.illustrationx.com/jp/NoelleRx



NoelleRx

www.illustrationx.com/jp/NoelleRx



NoelleRx

www.illustrationx.com/jp/NoelleRx



NoelleRx

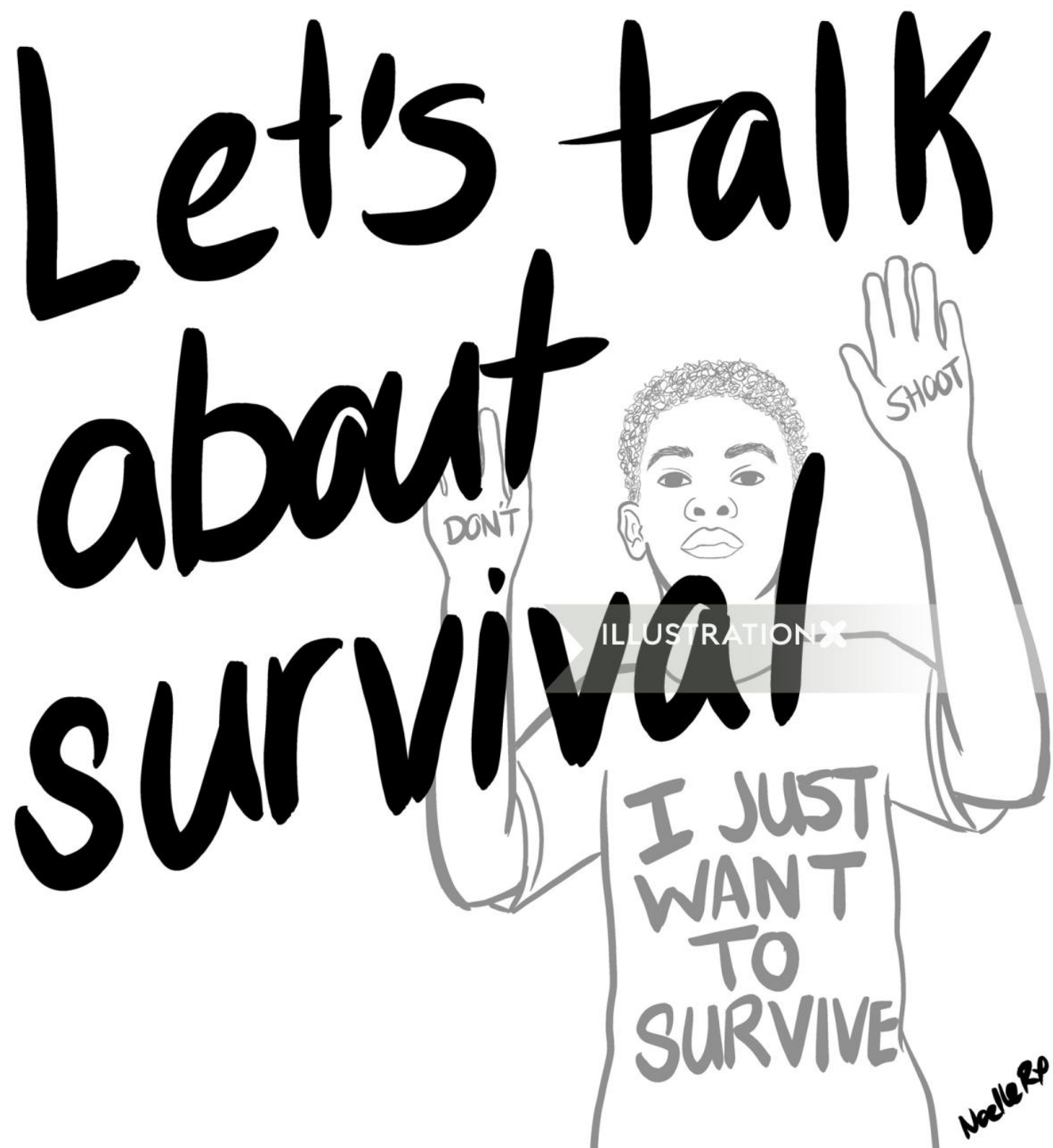
www.illustrationx.com/jp/NoelleRx



NoelleRx

www.illustrationx.com/jp/NoelleRx



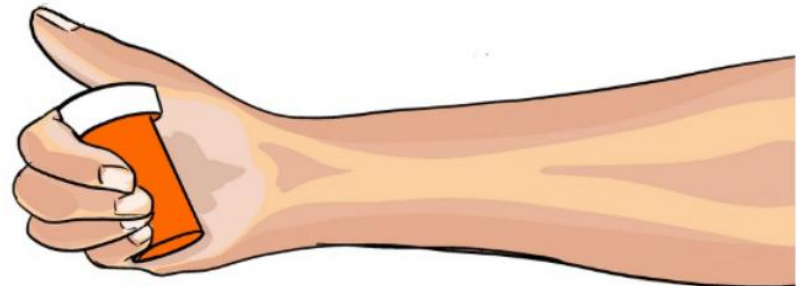


NoelleRx

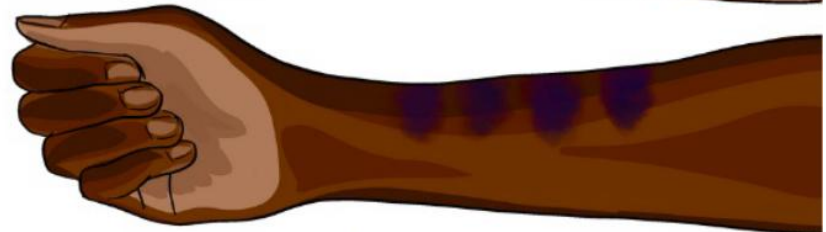
www.illustrationx.com/jp/NoelleRx



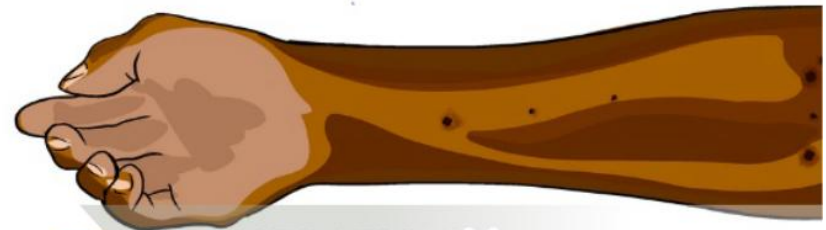
Non- medical opioid use



Physical abuse



Injectable drug use



Self harm



Mental Health Awareness

If you saw these signs,
would you judge the person
or would you offer them help?

This week practice compassion
with people dealing with things
that you don't understand

NoelleRx

Need advice?

We're ready to help



sea@illustrationx.com

+61 488 858 242

ILLUSTRATION 

Connecting You to a World of Illustration

www.illustrationx.com/jp